

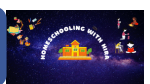
Name: _____

Date: _____

Alternate spellings of long i

Copy down the spellings and say the sound.

ie igh y i_e



Name: _____

Date: _____

Alternate spelling of long vowel "i"

The three letter "igh" can only come at the end on a word or just before "t"

ie = igh



high



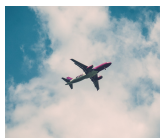
light



thigh



night



flight



fight



Name: _____

Date: _____

Alternative spelling long vowel "i"

Read the words and write them in the given spaces.



tie



pie



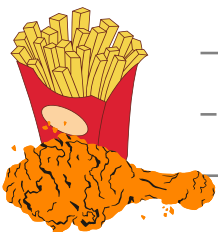
die



lie



cried



fried



Alternative Spelling of Long Vowel i - Activities

tie

pie

lie

high

sigh

thigh

sight

flight

bright

my

by

try

cry

dry

fly

why

shy

sly

kite

bike

hike

ride

side

tide

Alternative Spelling of Long Vowel i - Activities

ie as T

die

night

right

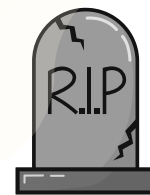
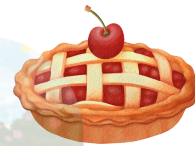
fry

spy

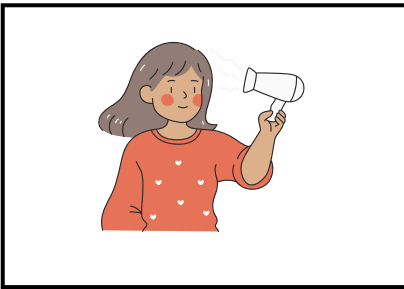
like

white

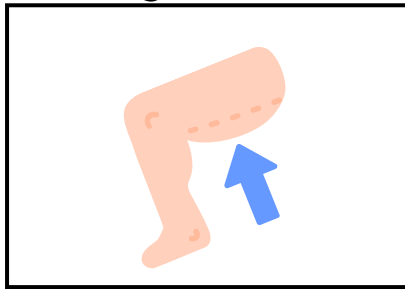
wide



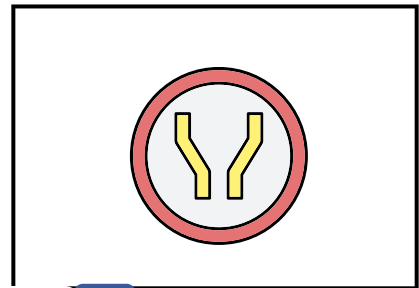
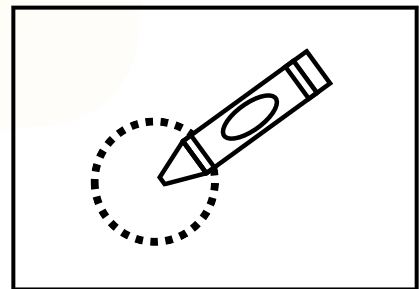
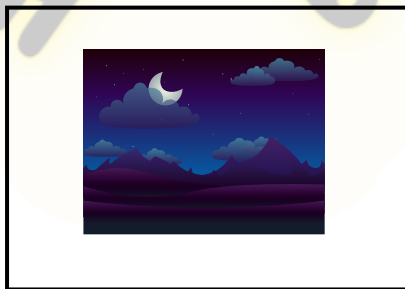
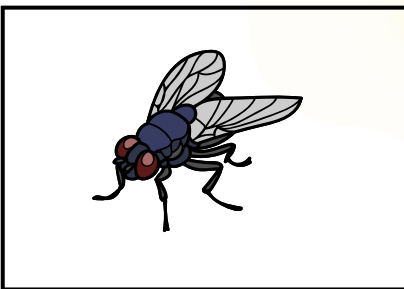
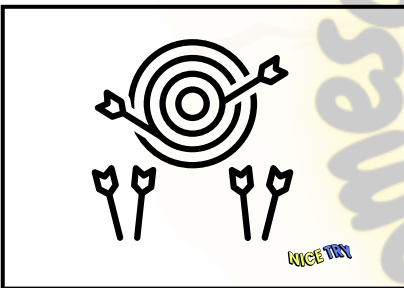
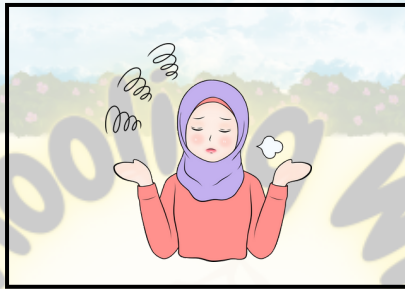
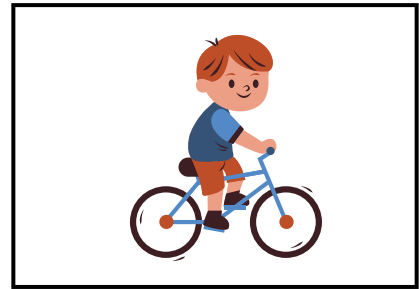
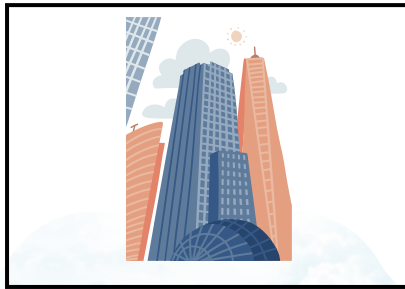
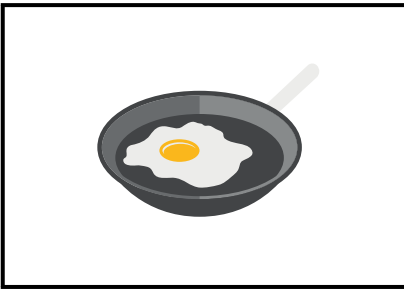
Y as ī



igh as ī



i_e



Name: _____

Date: _____

Alternative spelling long vowel "i"

i_e

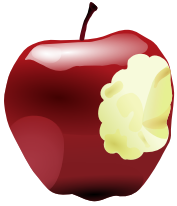
Read the words and write them in the given spaces.



bike



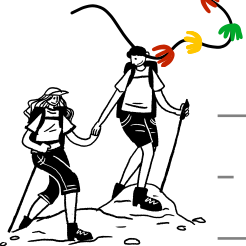
tide



bite



kite



hike



like

